



# **Bond Oversight Committee**

December 5, 2022

Meeting #2

# Purpose

Review BISD bond project progress,  
spending and schedules.

# General Information

## Architectural Services Overview

# Design Process

1. Programming (Pre-Design)
2. Schematic Design
3. Design Development
4. Construction Documents
5. Permitting / Bidding & Negotiating
6. Construction Administration

# Architectural Service Fees

Fee Basis: Lump Sum or Percent

- Basic Services
- Additional Services
- Supplemental Services
- Reimbursables

# Architectural Service Fees

## Billing for Services

Programming (5%)

Schematic Design (20%)

Design Development (20%)

Construction Documents (35%)

Permitting/Bidding & Negotiating (5%)

Construction Administration (15%)

# Construction Projects Update

# James L. Burrell Elementary



- In Construction
- Project Schedule
  - Site Clearing Complete
  - Building Pad Cut and Fill Complete
  - Preliminary Excavation of Ponds Complete
  - Paving / Site Cut and Fill in Progress
  - Drilled Piers are in Progress
  - Underground Utilities to begin Nov 2022



# Burrell Elementary Financial Information

	Project Budget				Available Budget
	\$40,064,028	Contract	Paid	Remaining	\$2,232,441
Architect Fees (Huckabee)		\$2,212,158	\$1,748,209	\$463,949	
Construction (Cloud)		\$35,619,429	\$1,398,720	\$34,220,709	
Misc & FFE		\$0	\$0	\$0	
		\$37,831,587	\$3,146,929	\$34,684,658	

*\*\*\$1,748,209 paid to Huckabee paid from remaining 2017 Bond Funds*

# Hubbard Branch Elementary

- Finalizing coordination with Developer for off-site improvements including the extension of OT Tyler and installation of sanitary sewer lines to serve the school site.
- Project Schedule
  - Design Development Complete Oct 2022
  - Construction Documents Complete Dec 2023
  - Bidding Jan 2023
  - GMP to Board Feb 2023
  - Building Construction Mar 2023



# Hubbard Branch Financial Information

	Project Budget				Available Budget
	\$43,567,482	Contract	Paid	Remaining	\$41,575,872
Architect Fees (Huckabee)		\$1,991,610	\$772,540	\$1,219,070	
Construction (American Constructors)		Awaiting GMP	\$0	\$0	
Misc & FFE		\$0	\$0	\$0	
		\$1,991,610	\$772,540	\$1,219,070	

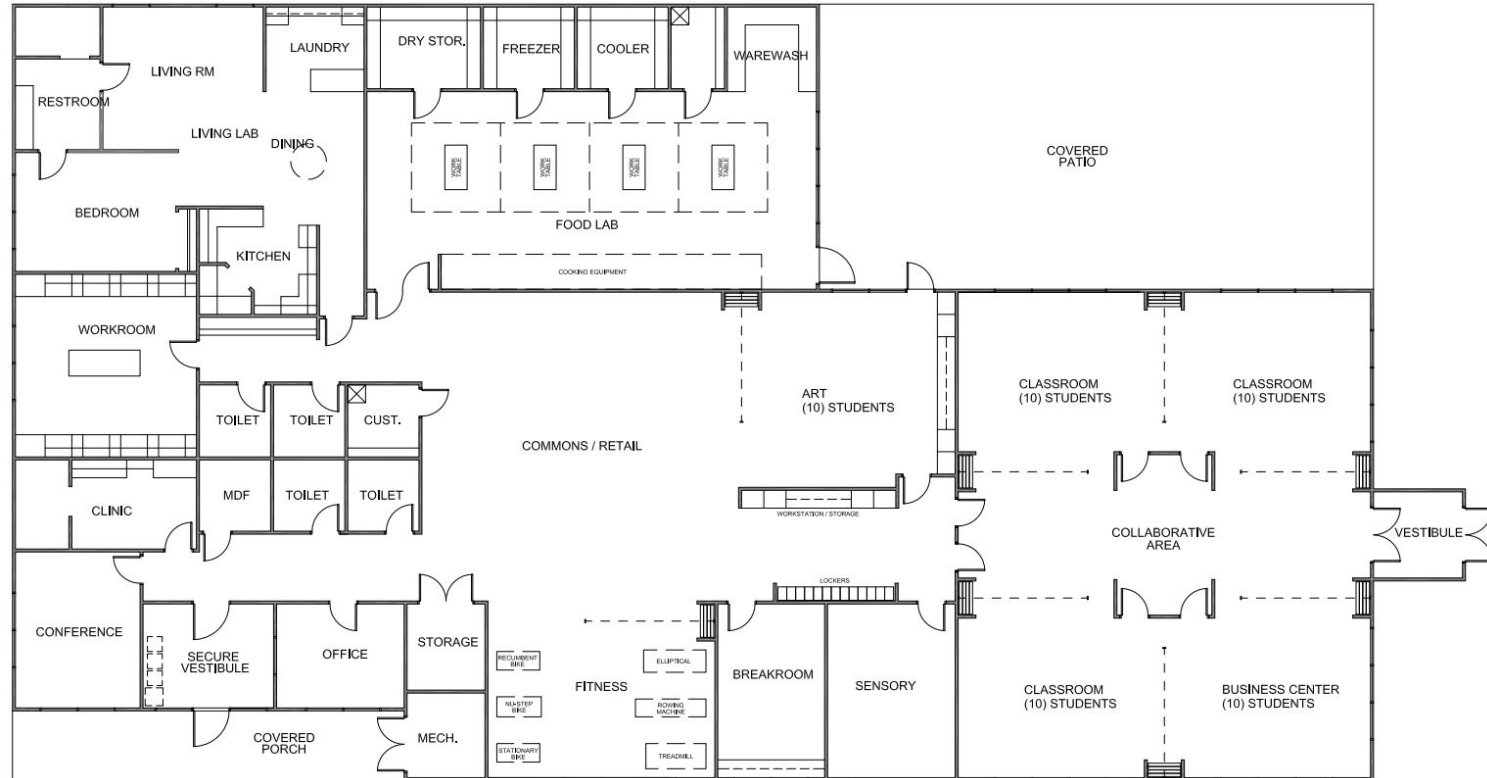
# Delta Program Facility

- Initial Program of Requirements
- Concept Plan
- Project Schedule
  - Dec 2022 – Board Approval of Architect Selection
  - Design – Spring 2023
- Location Considerations

## Program Requirements:

- Core Academic Spaces
- Commons / Food Prep / Retail Store
- Facility Support Spaces

# Delta Program Facility



**CONCEPT**

# Delta Program Facility Financial Information

	Project Budget				Available Budget
	\$2,500,000	Contract	Paid	Remaining	\$2,500,000
Architect Fees		\$0	\$0	\$0	
Construction		\$0	\$0	\$0	
Misc & FFE		\$0	\$0	\$0	
		\$0	\$0	\$0	

# Agriculture Facility Addition

- Initial Program of Requirements
- Concept Plan
- Project Schedule
  - Dec 2022 – Board Approval of Architect Selection
  - Design – Spring 2023
- Location

## Program Requirements:

- New Barn
  - Hog Accommodations - 75 to 80 animals
  - Poultry Accommodations - 20 animals
  - Feed storage
- Secure storage for tractor and trailer as well as general storage for Ag Farm operations
- Improvements to current agriculture facility to accommodate additional sheep, goats, and cattle
- Perimeter fencing around animal housing to help with predatory animals

# Agriculture Addition Facility Financial Information

	Project Budget				Available Budget
	\$2,000,000	Contract	Paid	Remaining	\$2,000,000
Architect Fees		\$0	\$0	\$0	
Construction		\$0	\$0	\$0	
Misc & FFE		\$0	\$0	\$0	
		\$0	\$0	\$0	

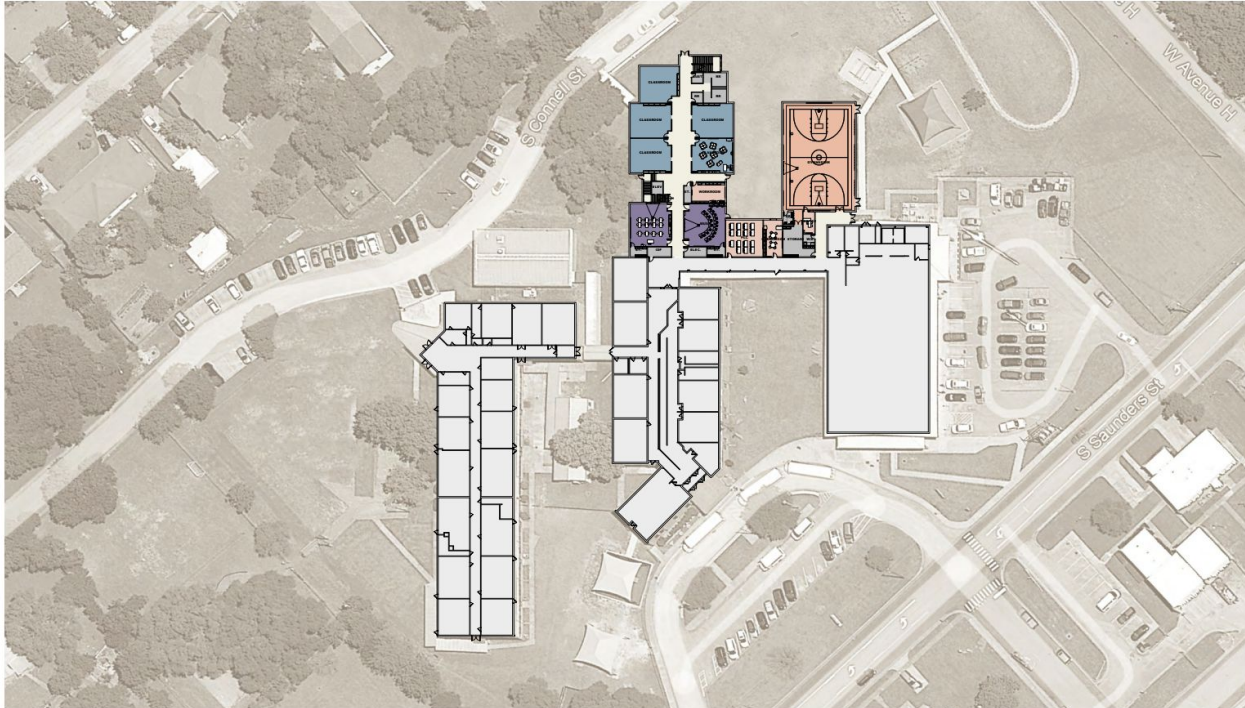


# Southwest Elementary Addition

- Initial Program of Requirements Complete
- Architect's Schematic Design presentation from Oct 21, 2022
- Project Schedule
  - Schematic Design Complete Oct 2022
  - SD Estimate Received Nov 18, 2022
  - Design Development Complete Nov 2022
  - DD Estimate due Dec 2022
  - Construction Documents Complete Mar 2023
  - GMP #1 to Board Apr 2023
  - Construction Procurement; Site Clearing Apr/May 2023
  - GMP #2 to Board Jun 2023
  - Building Construction Jun 2023 through Jul 2024

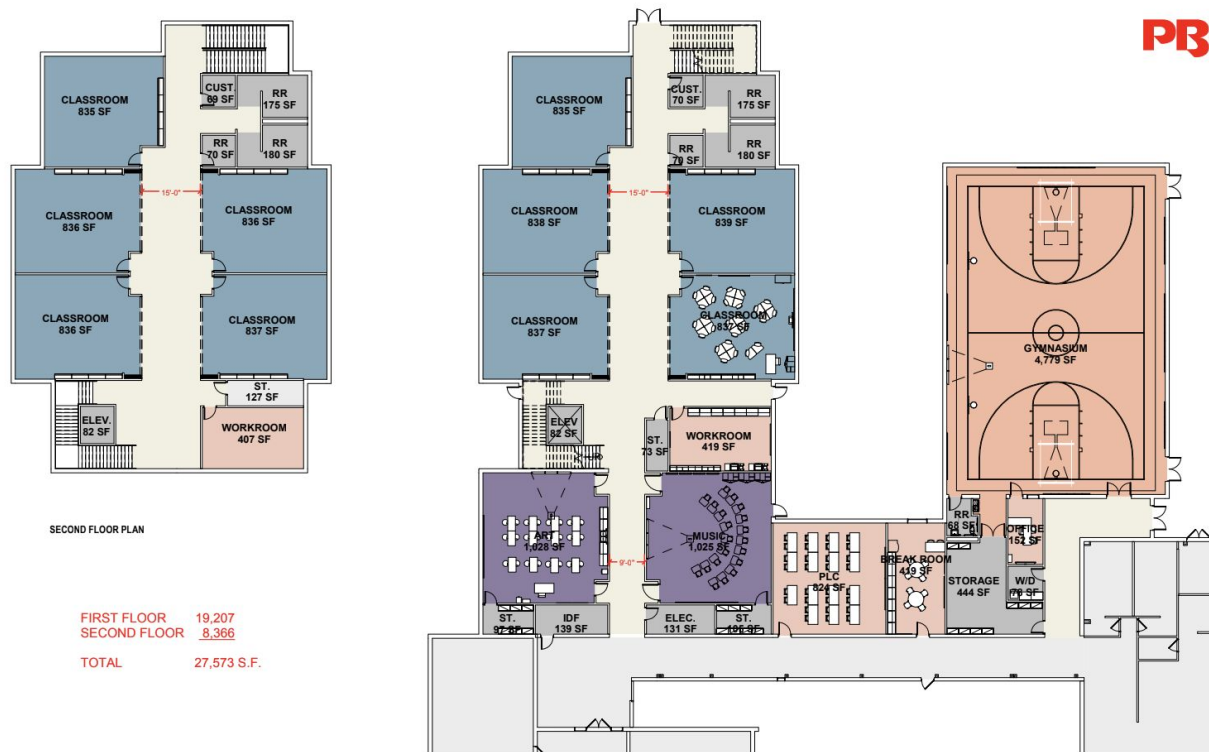
# Southwest Elementary Addition

PRK



**DRAFT**

# Southwest Elementary Addition



# Southwest Elementary Addition Financial Information

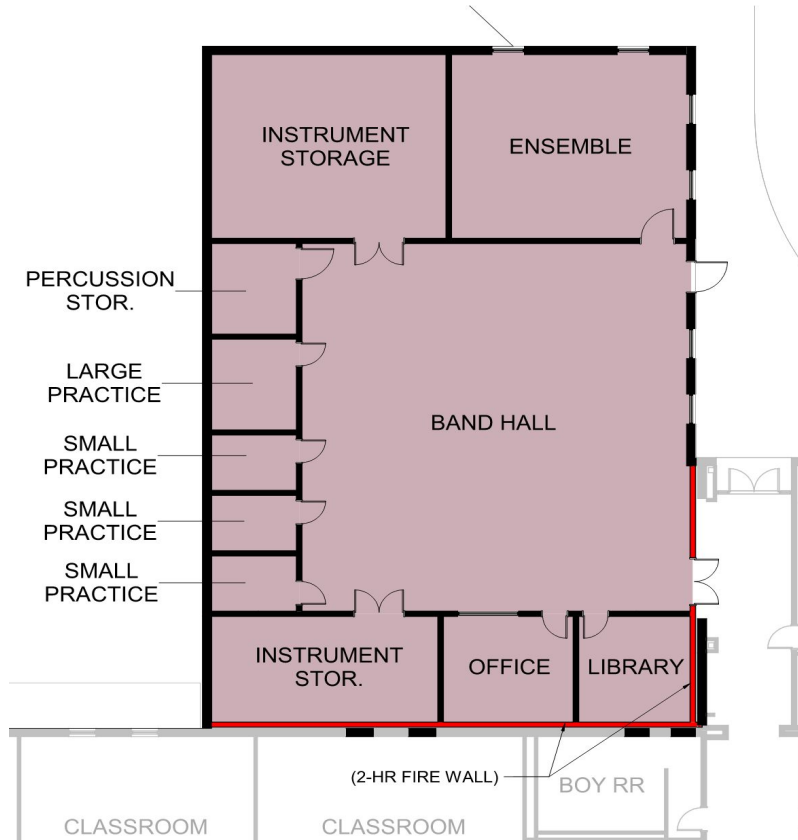
	Project Budget				Available Budget
	\$13,300,000	Contract	Paid	Remaining	\$12,571,980
Architect Fees (PBK)		\$728,020	\$6,880	\$721,140	
Construction (CORE)		Awaiting GMP	\$0	\$0	
Misc & FFE		\$0	\$0	\$0	
		\$728,020	\$6,880	\$721,140	

# Lake Belton Middle School Addition

- Architect's Program of Requirements
- Architect's Schematic Design presentation from Oct 18, 2022
- Project Schedule
  - Schematic Design Complete Nov 2022
  - SD Estimate Received Nov 18, 2022
  - Design Development Complete Feb 2023
  - DD Estimate due Mar 2023
  - Construction Documents Complete May 2023
  - GMP to Board Jul 2023
  - Building Construction Jul 2023 through Aug 2024



# Lake Belton Middle School Addition



**DRAFT**

# Lake Belton Middle School Addition



**DRAFT**

# LBMS Addition Financial Information

	<b>Project Budget</b>				<b>Available Budget</b>
	<b>\$8,582,703</b>	<b>Contract</b>	<b>Paid</b>	<b>Remaining</b>	<b>\$7,992,597</b>
<b>Architect Fees (O'Connell Robertson)</b>		\$590,106	\$27,095	\$563,011	
<b>Construction (CORE)</b>		Awaiting GMP	\$0	\$0	
<b>Misc &amp; FFE</b>		\$0	\$0	\$0	
		\$590,106	\$27,095	\$563,011	



# Belton High School Additions & Renovations

- Architect's Program of Requirements
- Architect's Schematic Design presentation from Nov 1, 2022
- Project Schedule
  - Schematic Design Complete Oct 2022
  - SD Estimate Received Nov 18, 2022
  - Design Development Complete Jan 2023
  - DD Estimate due Feb 2023
  - Construction Documents Complete Apr 2023
  - GMP #1 to Board Apr 2023
  - Construction Procurement; Site Clearing Apr/May 2023
  - GMP #2 to Board Jun 2023
  - Building Construction Jun 2023 through Aug 2024



# Belton High School Band Hall



⌒ BAND HALL ADDITION

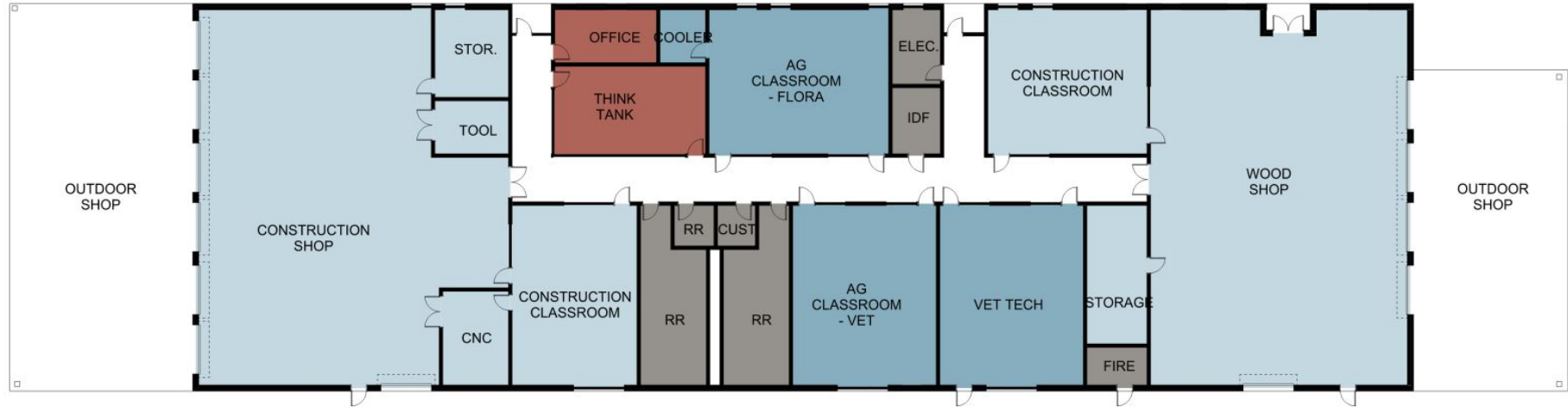
**DRAFT**

# Belton High School CTE Addition (Phase 1)



**DRAFT**

# Belton High School CTE Renovation (Phase 1)



**DRAFT**

# BHS Additions & Renovations Financial Information

	<b>Project Budget</b>				<b>Available Budget</b>
	<b>\$28,524,414</b>	<b>Contract</b>	<b>Paid</b>	<b>Remaining</b>	<b>\$26,667,599</b>
<b>Architect Fees (O'Connell Robertson)</b>		\$1,856,815	\$84,269	\$1,772,546	
<b>Construction (CORE)</b>		Awaiting GMP	\$0	\$0	
<b>Misc &amp; FFE</b>		\$0	\$0	\$0	
		\$1,856,815	\$84,269	\$1,772,546	

# Discussion



# Miscellaneous Projects Update

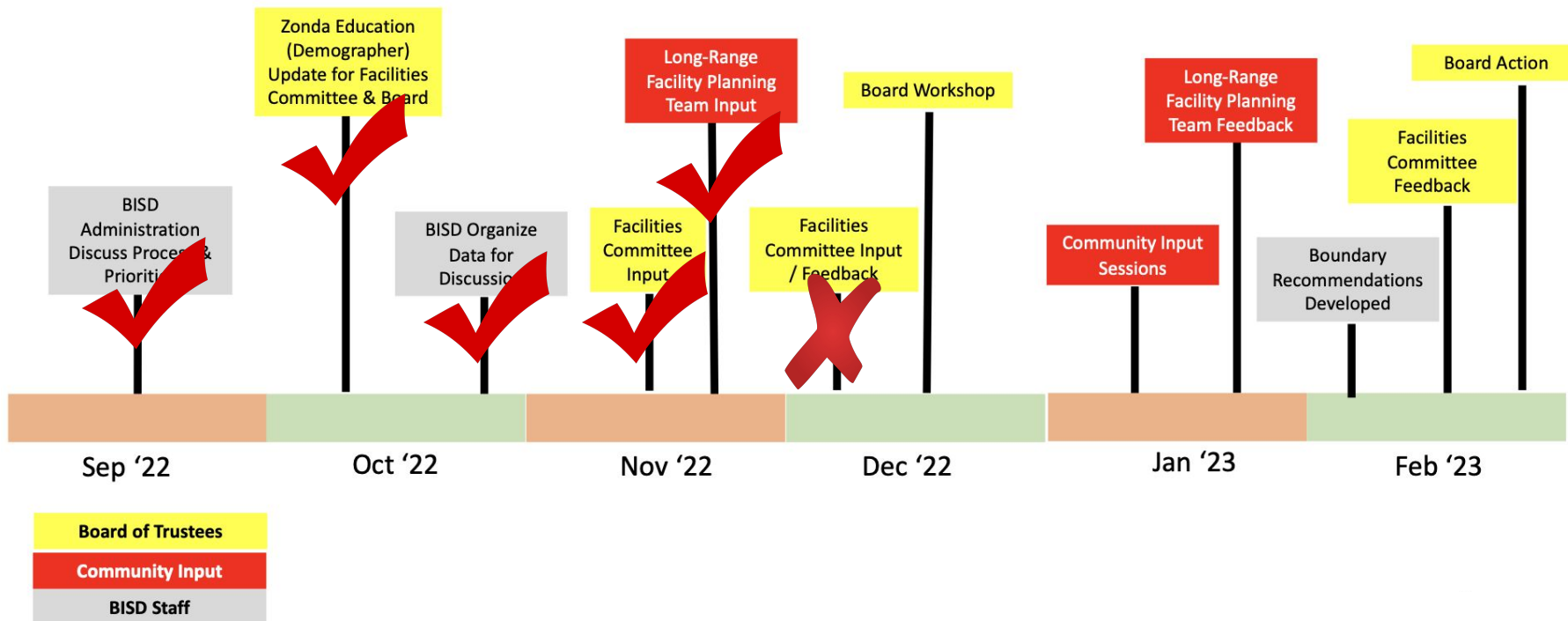
1. Land Purchases
2. Transportation
3. Technology
4. Safety and Security
5. MEP and Roofing
6. Attendance Boundary Process

# Miscellaneous Projects Update

	<b>Project Budget</b>	<b>Committed</b>	<b>Paid</b>	<b>Available Budget</b>
<b>Land Purchase</b>	\$7,000,897	\$0	\$0	\$7,000,897
<b>Transportation</b>	\$5,625,000	\$2,630,915	\$0	\$2,994,085
<b>Technology</b>	\$676,624	\$0	\$0	\$676,624
<b>Safety &amp; Security</b>	\$6,041,040	\$28,000	\$0	\$6,013,040



# 2022 Attendance Boundary Process



# Discussion



# Bond Communication Priorities

What information does our community need to be well informed about the bond?

# Discussion

